

# Issues Contributing Area

## What is an Issues Contributing Area?

Issues Contributing Areas (ICAs) are areas of land and water where anthropogenic activities are contributing to water quality issues. ICAs are identified by the Quinte Source Protection Committee in areas around municipal drinking water sources where a contaminant is present at a level of concern, or showing an upward trend. Not every municipal source has an ICA, only systems with contaminants at a level of concern, or showing an upward trend. ICAs in the Quinte Area are defined in the Quinte Source Protection Plan.

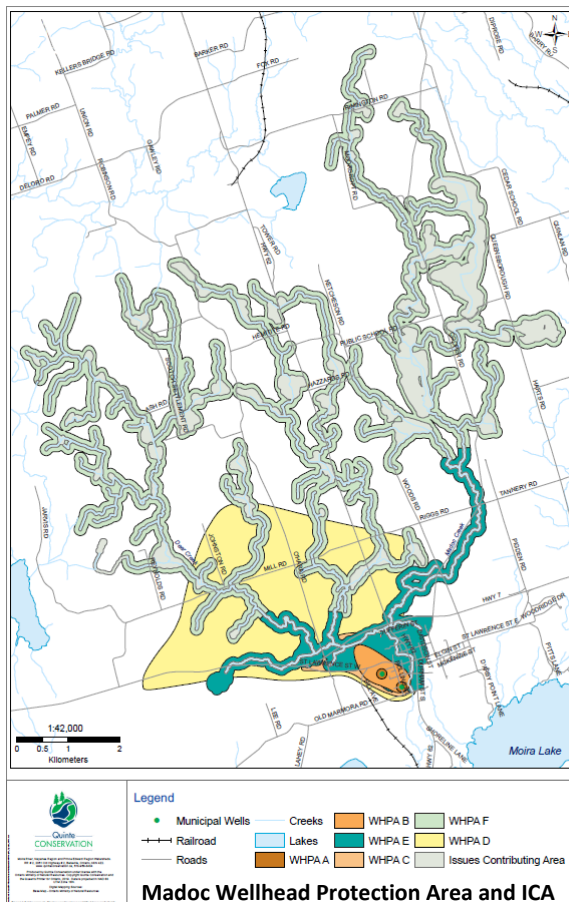


Figure 1: Madoc Wellhead Protection Area and Issues Contributing Area.

## How ICAs are Identified?

For each issue identified, an ICA is delineated based on land uses that could potentially contribute to the particular contamination issue. For example, Madoc has a large ICA to protect their municipal source of drinking water (Figure 1). Activities in ICAs that are contributing to the issue are considered a significant drinking water threat. These activities may require a Risk Management Plan to ensure that their actions are not affecting the drinking water quality of the municipal source.

## How ICAs are Identified?

For each issue identified, an ICA is delineated based on land uses that could potentially contribute to the particular contamination issue. ICAs can be created for municipal Wellhead Protection Areas (WHPAs), or municipal Intake Protection Zones (IPZs). These areas are called WHPA-ICA and IPZ-ICA.



## What Types of Issues are there in the Quinte Area?

Issues are chemically specific and can include substances such as microcystins (harmful algal blooms) chloride, sodium, and Trichloroethylene (TCE). In the Quinte area, nitrates, organic nitrogen, total coliforms, and *E.coli*. are current issues that affects the watershed's water quality.

Sodium, chloride, and microcystins could be a concern for the Quinte area in the future due to road salt and harmful algal blooms.

## Examples of Drinking Water Threat Activities in Quinte's ICAs



Sewage systems



Waste disposal sites



Storage of snow



Livestock grazing/outdoor animal confinement



Application, handling and storage of manures, biosolids, and commercial fertilizers