



Source Water Protection Primer

Clean and safe drinking water is a necessity for life. If we aren't careful, some of our activities can contaminate, and/or deplete our drinking water sources. To protect municipal drinking water sources, Ontario passed the *Clean Water Act* (the Act) in 2006. The Act identifies 19 areas and regions in Ontario that are required to create Source Protection Plans to protect municipal sources of drinking water from drinking water threats. The Quinte Source Protection Plan was developed by the Quinte Source Protection Committee, based on science and the input from stakeholders.

Why is Source Water Protection Important?

- Protects public health.
- Avoids the cost needed to clean up contaminated water sources.
- Reduces the cost of water treatment.
- Eliminates the need to find new drinking water sources when existing ones become contaminated.
- Ensure a long-term adequate supply of clean water for economic growth.



What are sources of drinking water?

- In the Quinte area, municipalities draw drinking water for municipal distribution and public use from groundwater wells (i.e. underground aquifers) and surface water intakes (i.e. lakes, rivers, streams).

What is the Source Protection Plan?

- The goal of the Source Protection Plan is to protect existing and future municipal drinking water sources in the Quinte area, and to ensure that activities identified as significant threats cease to be a threat and that other activities do not become significant drinking water threats.
- The Plan includes policies, developed in consultation with local community members, to address drinking water threats identified in the science-based Assessment Report.

How was the Plan Developed?

- A 21-member Source Protection Committee with representatives from local municipalities, agriculture, business, the Mohawks of the Bay of Quinte and the public came together to develop policies and consulted with the public. The policies were constructed based on technical studies, working groups, and scientific data.

Where does the Quinte Source Protection Plan apply?

- The Quinte Source Protection Plan is based on Quinte Conservation's jurisdiction boundaries. However, policies are only applicable in vulnerable areas around municipal drinking water systems. This means that the policies in the Plan apply to a relatively small and very specific areas in Ameliasburgh, Belleville, Deloro, Deseronto, Greater Napanee, Madoc, Peats Point, Picton, Point Anne, Tweed, and Wellington (less than one percent of the total Quinte area).

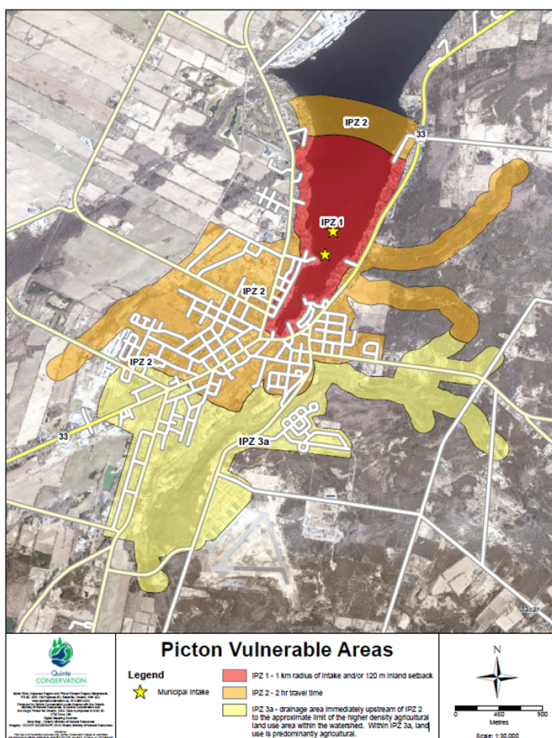


How are the Policies Implemented?

- Policies are implemented by a variety of stakeholders, including municipalities, Risk Management Officials, Ministries, and others. Each policy identifies who the implementing body is and the effective date. To ensure the policies are implemented, the responsible parties must submit information for the annual report.

What are Risk Management Services?

- The Plan calls for measures to manage the risk of some activities and the prohibition of others. Risk Management Services are provided by Quinte Conservation staff on behalf of the municipalities. Risk Management Officials will review planning requests in vulnerable areas to determine if they will cause a risk or not to the municipal drinking water source. They will also negotiate Risk Management Plans with people engaged in activities that could pose a risk to the drinking water source to ensure that preventative measures are in place.



What is a significant threat?

- Activities on land and in water near municipal drinking water sources may adversely affect the quality and quantity of drinking water. The Province of Ontario has identified 22 drinking water threats under the Clean Water Act.

What are vulnerable areas?

- Vulnerable areas surround municipal drinking water sources where certain activities can pose a threat to the water quality or quantity. These areas include Wellhead Protection Areas (WHPAs), Intake Protection Zones (IPZs), and Issues Contributing Areas (ICAs).
- Other areas of importance are Highly Vulnerable Aquifers (HVA) and Significant Groundwater Recharge Areas (SGRA)

Where are the drinking water systems in Quinte?

Approximately 50% of Quinte's residents rely on municipal drinking water, while the other 50% rely on private systems.

- Groundwater wells:* Deloro, Madoc, Peats Point and Tweed
- Surface water intakes:* Ameliasburgh, Belleville, Deseronto, Napanee, Picton, Point Anne and Wellington.